



**Kings Wood Park, Epping**  
**Price Range £775,000 - £800,000**

 4  3  2  B

**MILLERS**  
ESTATE AGENTS

\* PRICE RANGE £775,000 - £800,000 \* SEMI DETACHED HOME \* THREE FLOORS \* GARAGE & DRIVE \* SOUTH FACING GARDEN \* NO ONWARD CHAIN \* OPPOSITE EPPING FOREST \*

Nestled in the highly sought-after Kings Wood Park area of Epping, this charming semi-detached town-house offers a perfect blend of comfort & modern living. Spanning an impressive 1,830 sq ft over three floors, the property boasts two inviting reception rooms, four generous bedrooms & three bathrooms, making it an ideal family home.

Greeted by a welcoming hallway and cloakroom WC leading to a spacious living room which features double doors that open into a stunning open-plan family area, creating a seamless flow between spaces. The beautifully fitted integrated kitchen, complete with a central island and some recently fitted appliances, is perfect for culinary enthusiasts and is complemented by a delightful dining area that overlooks the rear garden through elegant French doors.

The impressive master bedroom benefits from French doors that lead to a private balcony, offering lovely views of the garden. A further double bedroom & family bathroom ensure ample space for relaxation. Ascending to the top floor, you will find two additional double bedrooms & a convenient Jack & Jill shower room.

The exterior is equally appealing, with a front garden overlooking the forest and bordered by hedges for added privacy. Side access leads to a superbly maintained rear garden, featuring a patio area with a charming wooden gazebo, perfect for alfresco dining. The garden is a true haven for gardening enthusiasts, adorned with a lush lawn, mature trees, and vibrant flower borders. A garage to the rear of the garden has power and lighting and offers further parking in front.

A fitted burglar alarm provides added peace of mind, while the recently renewed gas boiler, pumps, valves, and thermostat, together with a new dishwasher and washing machine, ensure comfort and convenience throughout the home.





## GROUND FLOOR

### Cloakroom WC

6' x 3'4" (1.83m x 1.02m)

### Living Room

17'6" x 11'7" (5.33m x 3.54m)

### Kitchen Dining Room

19'2" x 19'2" (5.85m x 5.83m)

## FIRST FLOOR

### Bedroom One

17'8" x 12'5" (5.38m x 3.79m)

### Balcony

7'3" x 11'5" (2.22m x 3.49m)

### En-suite Shower Room

8'8" x 5'11" (2.64m x 1.80m)

### Bedroom Two

12'8" x 11'3" (3.87m x 3.43m)

### Family Bathroom

6'6" x 7'3" (1.98m x 2.21m )

## SECOND FLOOR

### Bedroom Three

12'0" x 11'7" (3.67m x 3.54m)

### Bedroom Four

9'1" x 11'8" (2.76m x 3.55m)

### Jack & Jill Shower Rm

8'3" x 6'11" (2.51m x 2.11m)

## EXTERIOR

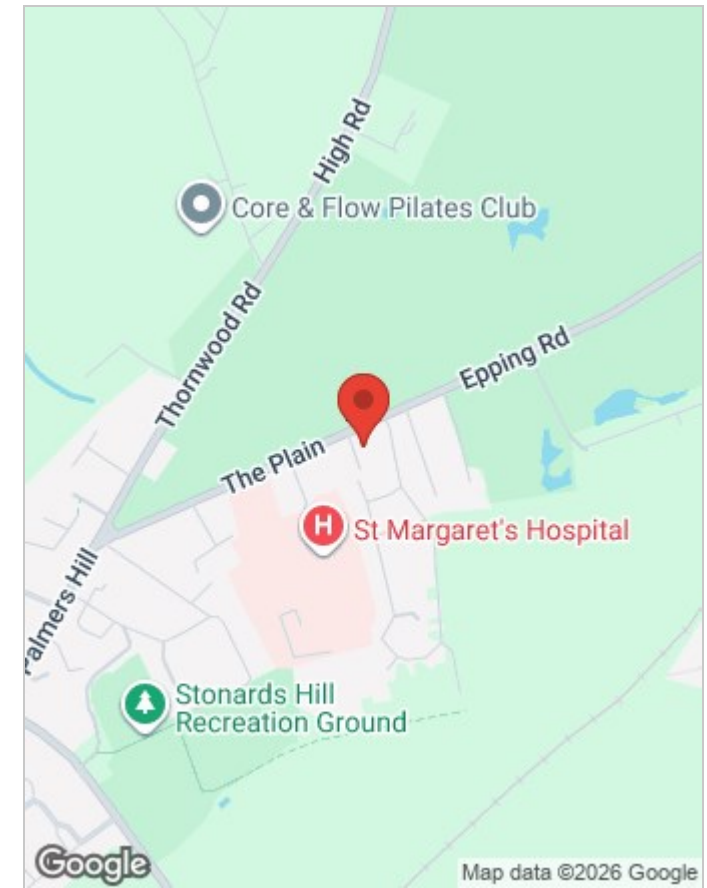
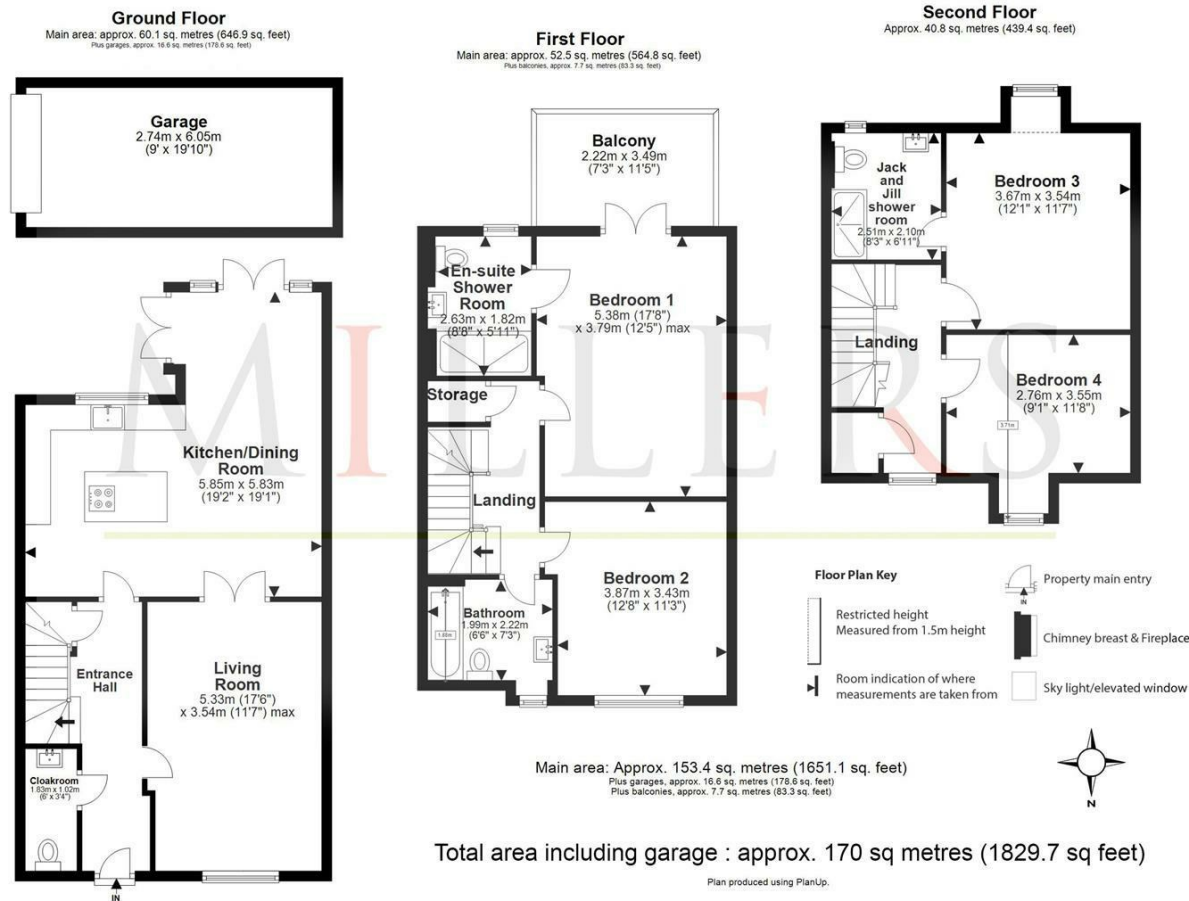
### Garage

19'10" x 9' (6.05m x 2.74m)

### Rear Garden

37'6" x 26'2" (11.43m x 7.98m)





Energy Efficiency Rating		Environmental Impact (CO <sub>2</sub> ) Rating			
	Current	Potential		Current	Potential
Very energy efficient - lower running costs			Very environmentally friendly - lower CO <sub>2</sub> emissions		
(92 plus) <b>A</b>			(92 plus) <b>A</b>		
(81-91) <b>B</b>			(81-91) <b>B</b>		
(69-80) <b>C</b>			(69-80) <b>C</b>		
(55-68) <b>D</b>			(55-68) <b>D</b>		
(39-54) <b>E</b>			(39-54) <b>E</b>		
(21-38) <b>F</b>			(21-38) <b>F</b>		
(1-20) <b>G</b>			(1-20) <b>G</b>		
Not energy efficient - higher running costs			Not environmentally friendly - higher CO <sub>2</sub> emissions		
<b>England &amp; Wales</b>	EU Directive 2002/91/EC		<b>England &amp; Wales</b>	EU Directive 2002/91/EC	
		81			88

## Viewing

Please contact our Millers Office on 01992 560555 if you wish to arrange a viewing appointment for this property or require further information.

These particulars, whilst believed to be accurate are set out as a general outline only for guidance and do not constitute any part of an offer or contract. Intending purchasers should not rely on them as statements of representation of fact, but must satisfy themselves by inspection or otherwise as to their accuracy. No person in this firms employment has the authority to make or give any representation or warranty in respect of the property.